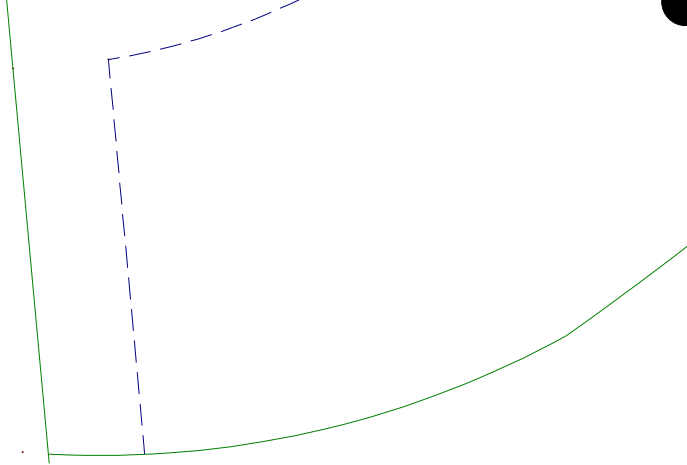
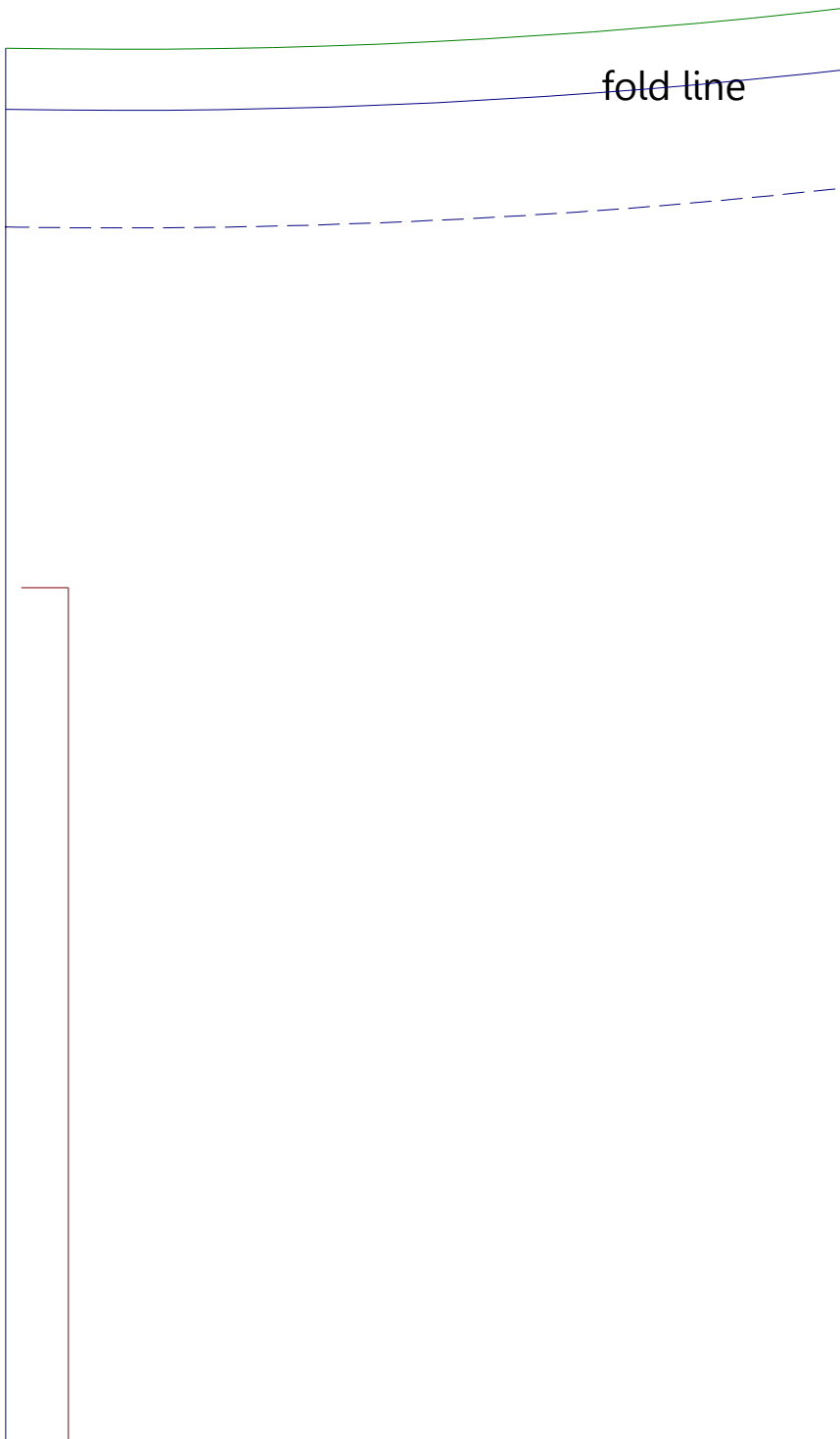


cut 6
all size

Braided straps

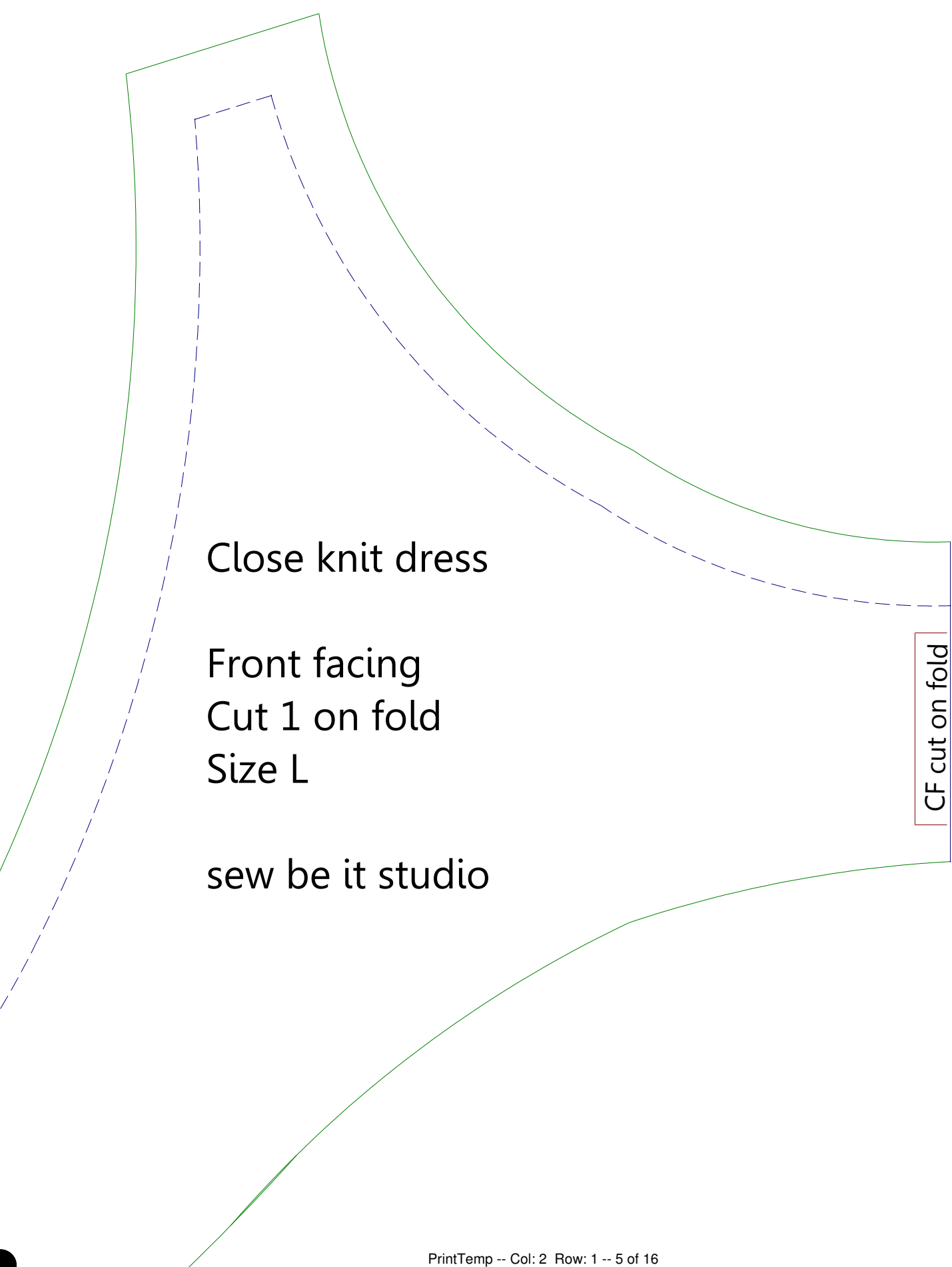


fold line



center back cut on fold

C
B
C
S
SE



Close knit dress

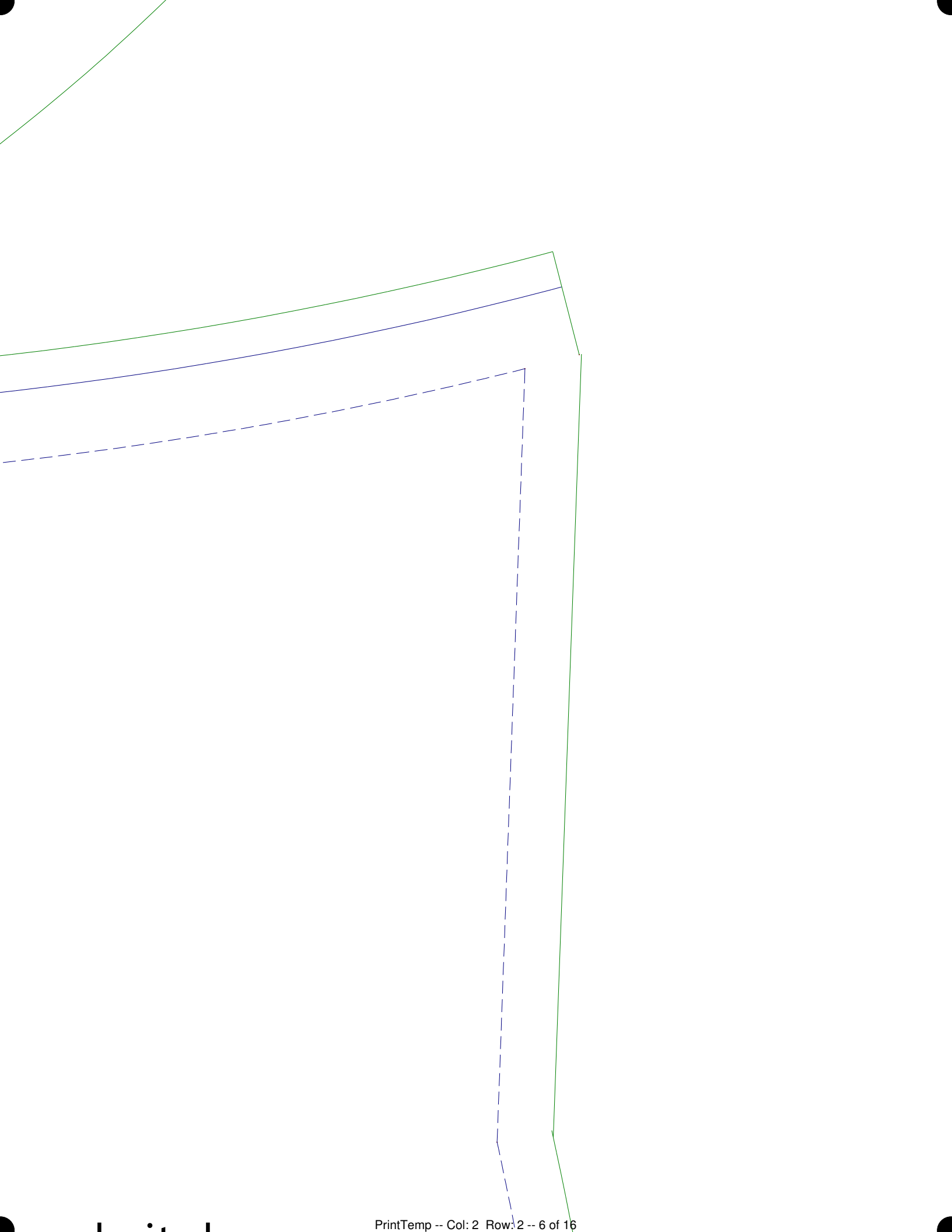
Front facing

Cut 1 on fold

Size L

sew be it studio

CF cut on fold



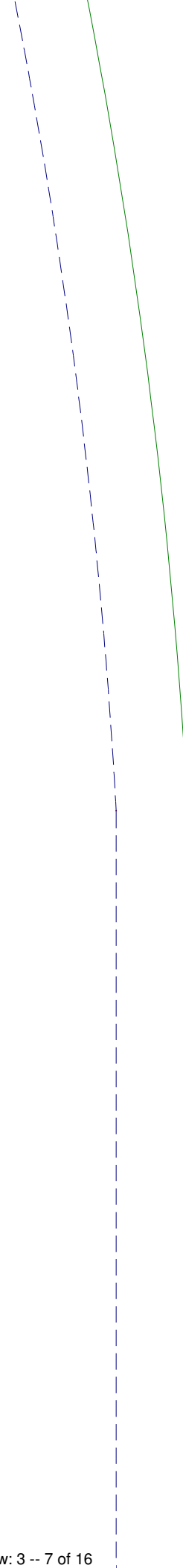
rose knit dress

ack

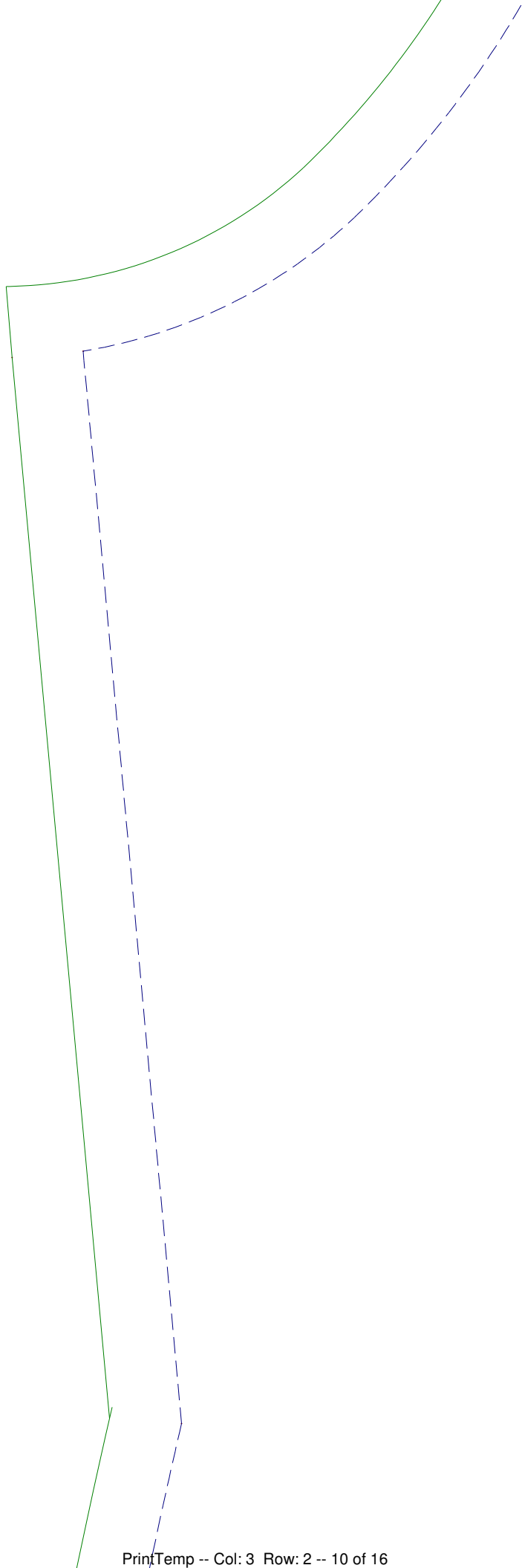
ut 1 on fold

ze L

ew be it studio







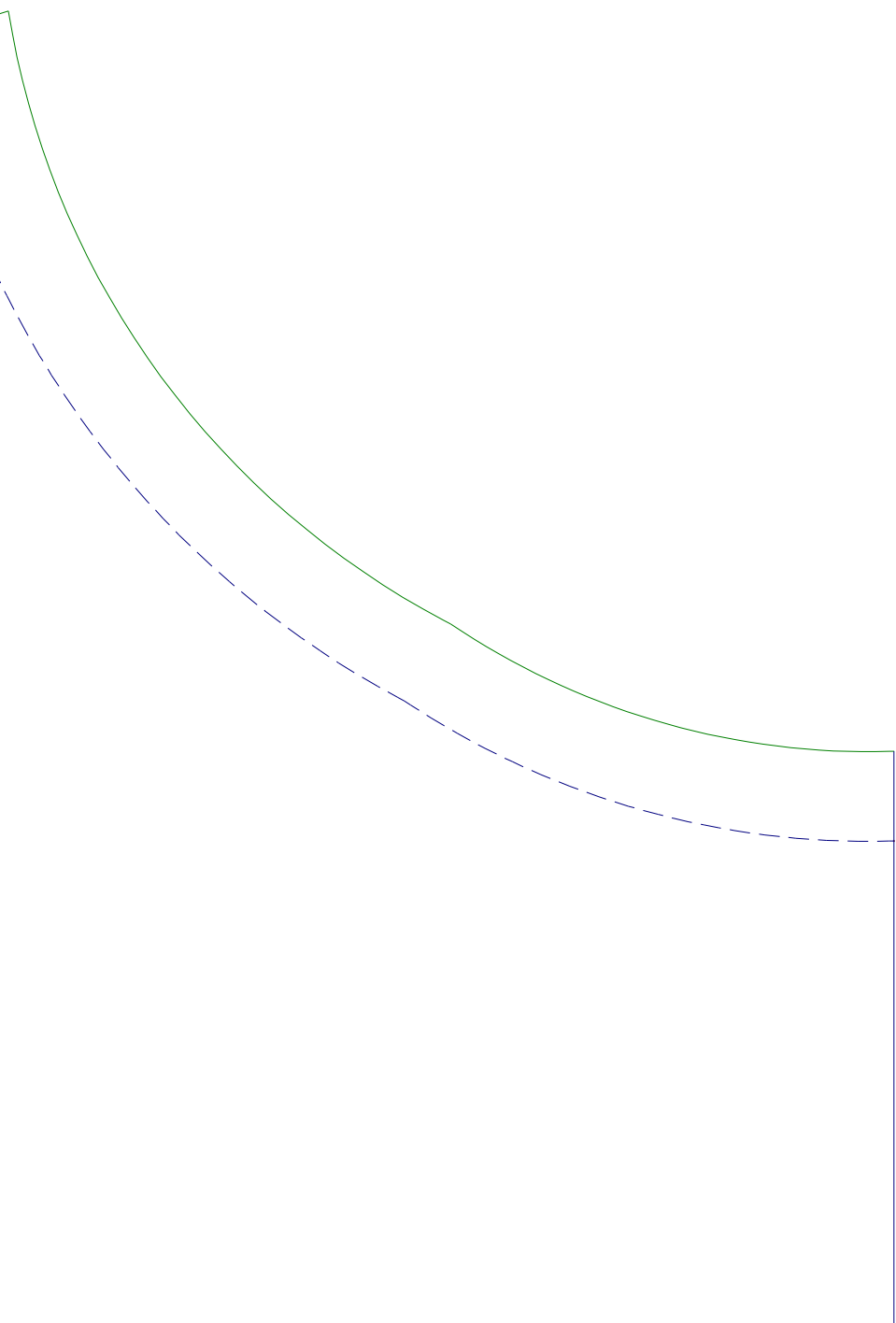
Clo

Fro

Cut

Size

sew



se knit dress

nt

t 1 on fold

e L

w be it studio

center front cut on fold

