

cut 6  
all size

braided straps

fold line

Close kni

Back

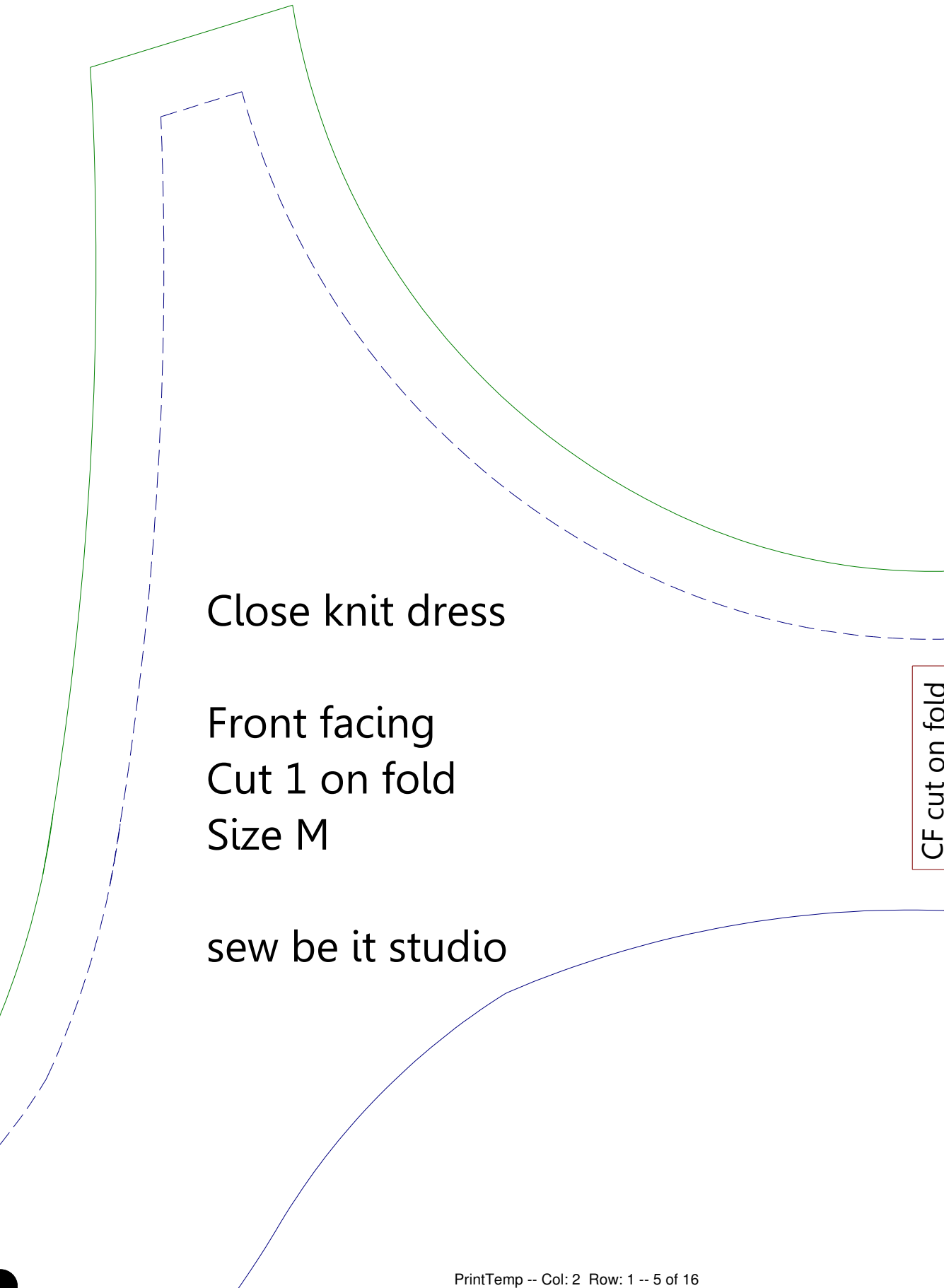
fold

center back cut on fo

Cut 1 on  
Size M

sew be it





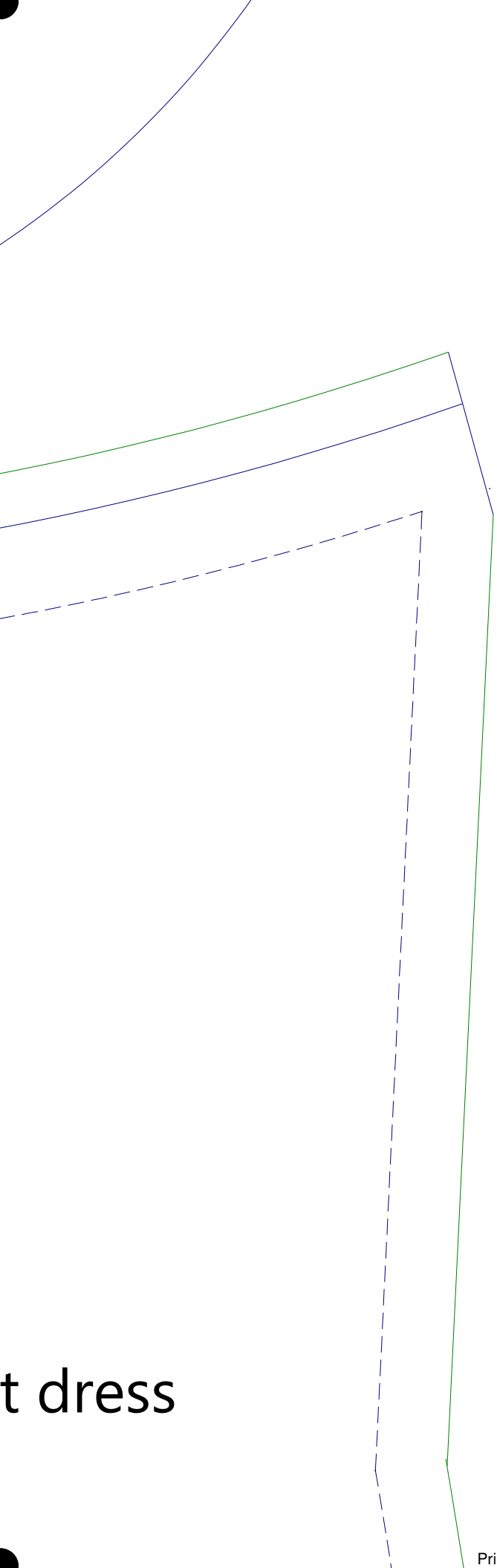
Close knit dress

Front facing  
Cut 1 on fold  
Size M

sew be it studio

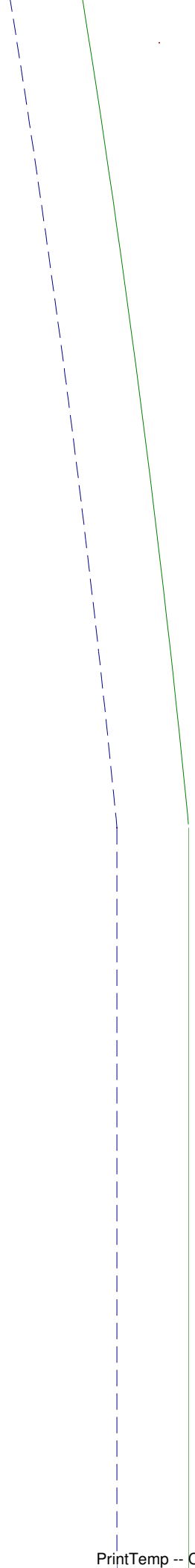
CF cut on fold

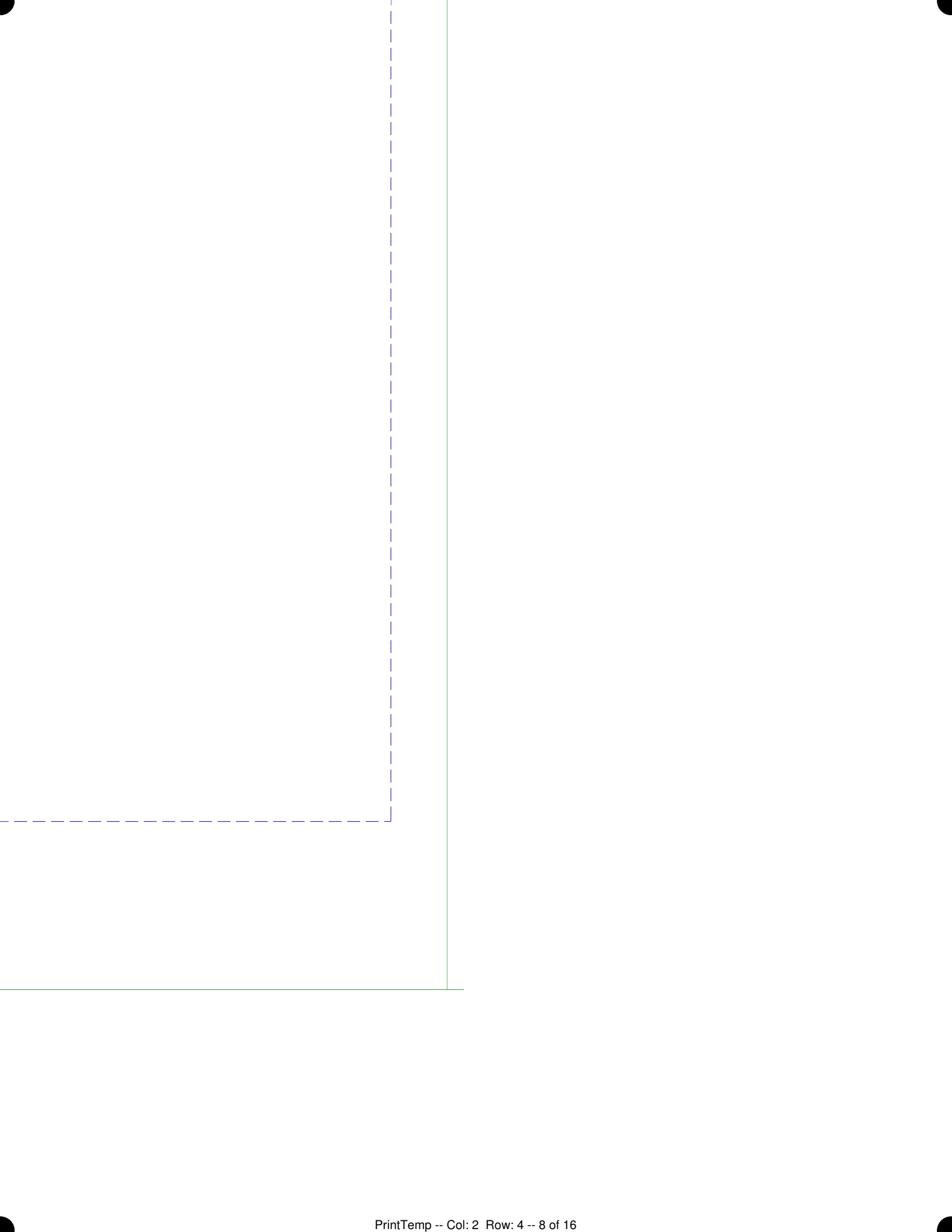
t dress



fold

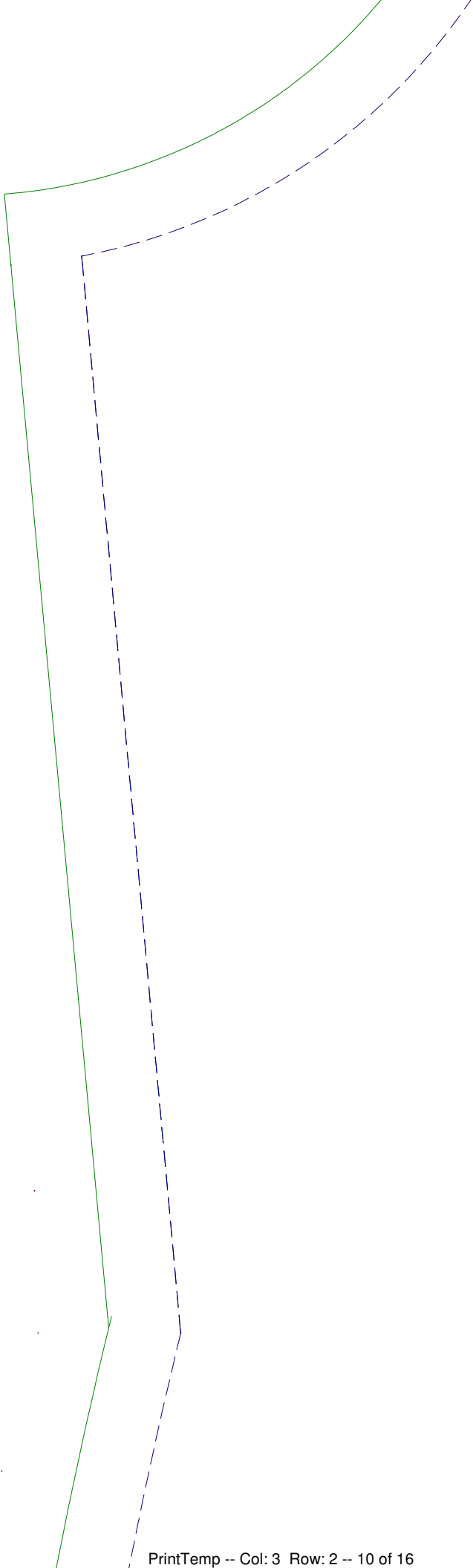
studio











Close knit

Front

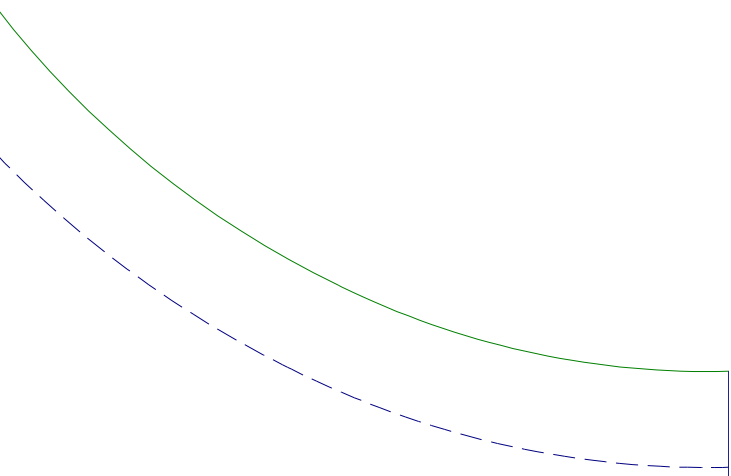
Cut 1 on f

Size M

sew be it







t dress

fold

studio

center front cut on fold



