



← cut on fold

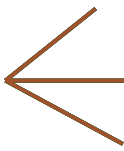
Holly Top Back Yoke Size 2 to 10

Cut 2 on fold

Center back



gathered

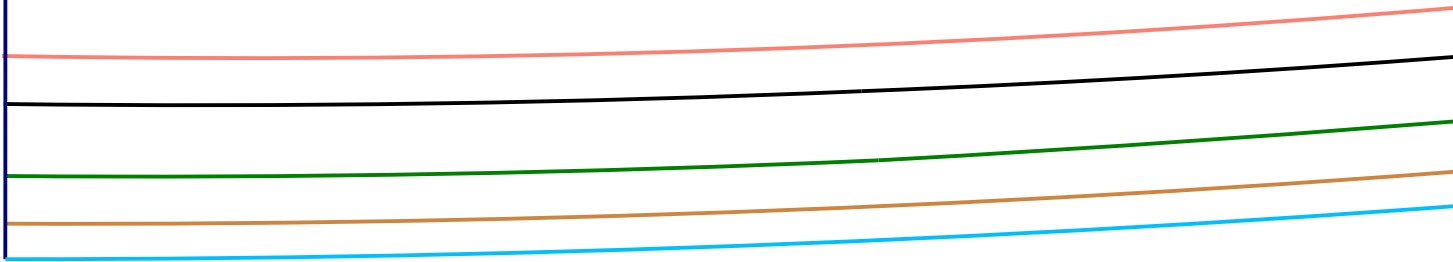


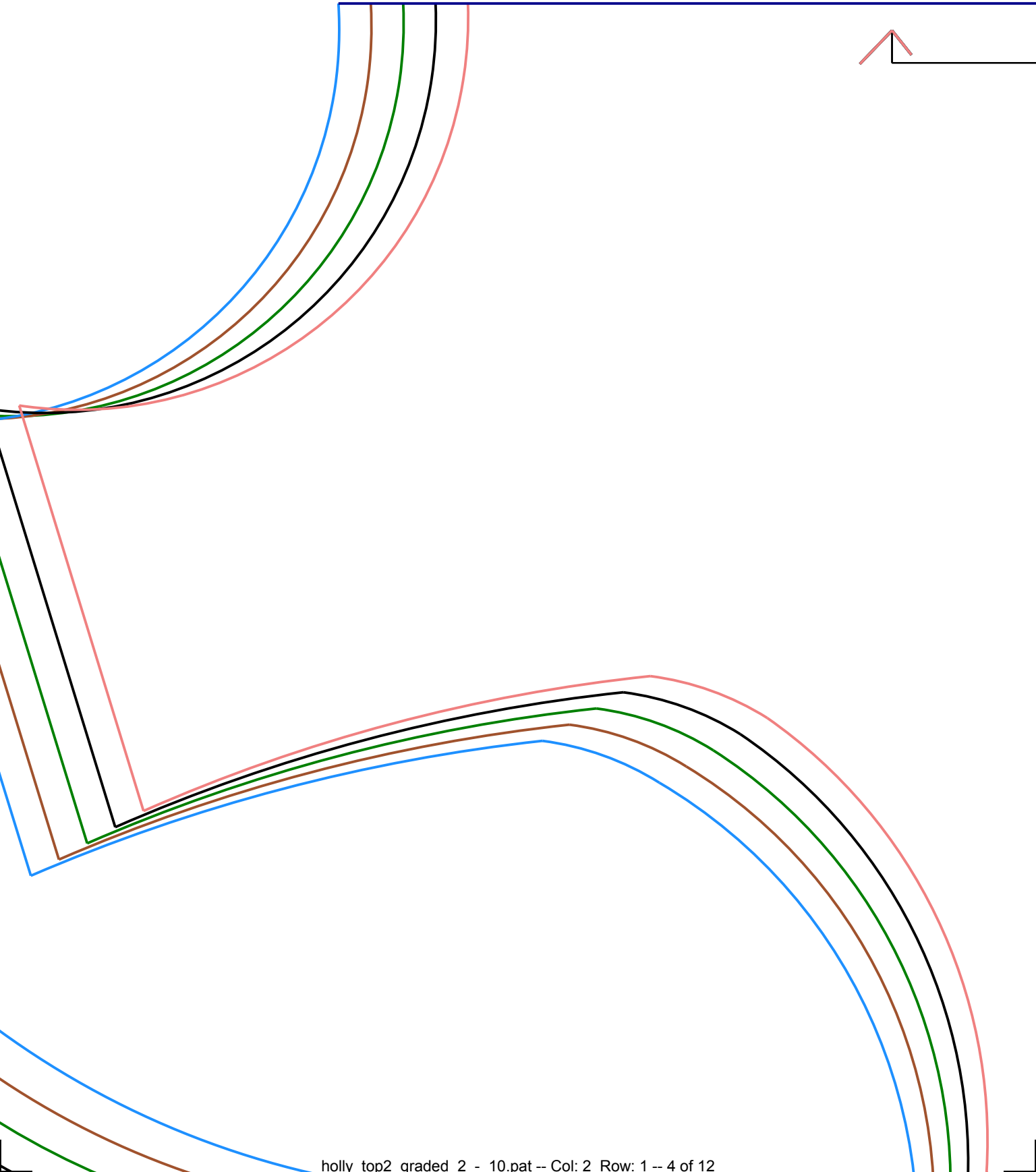
cut on fold

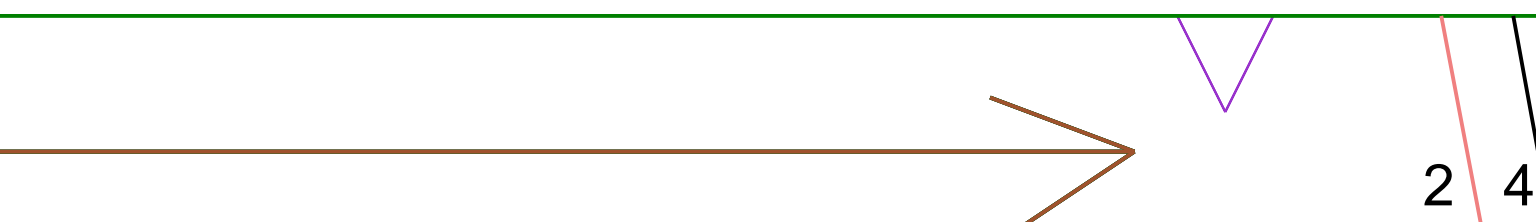
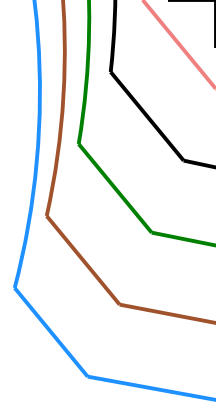
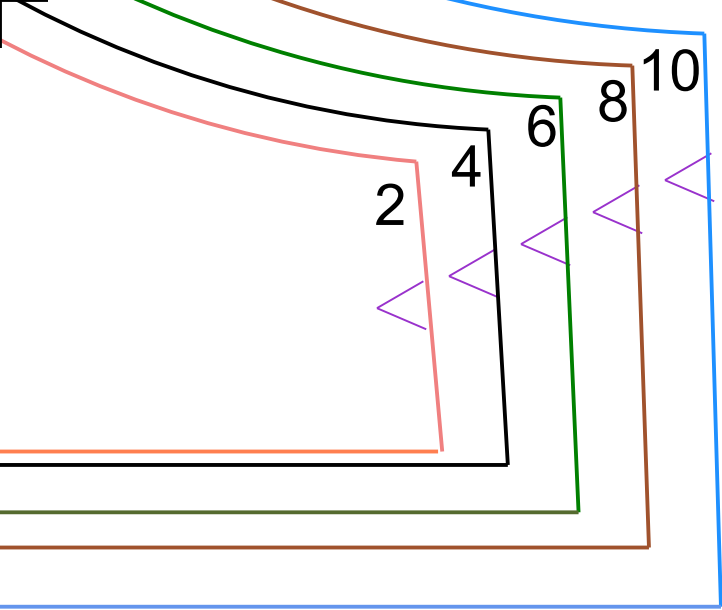
Holly Top
Lower back
Size 2 to 10

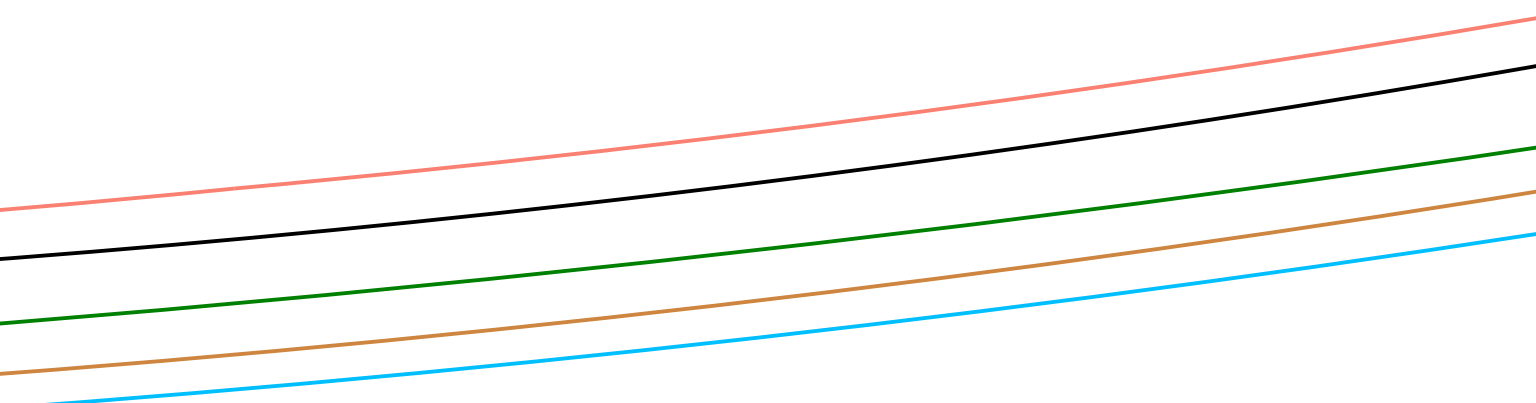
Cut 1 on fold

center back c



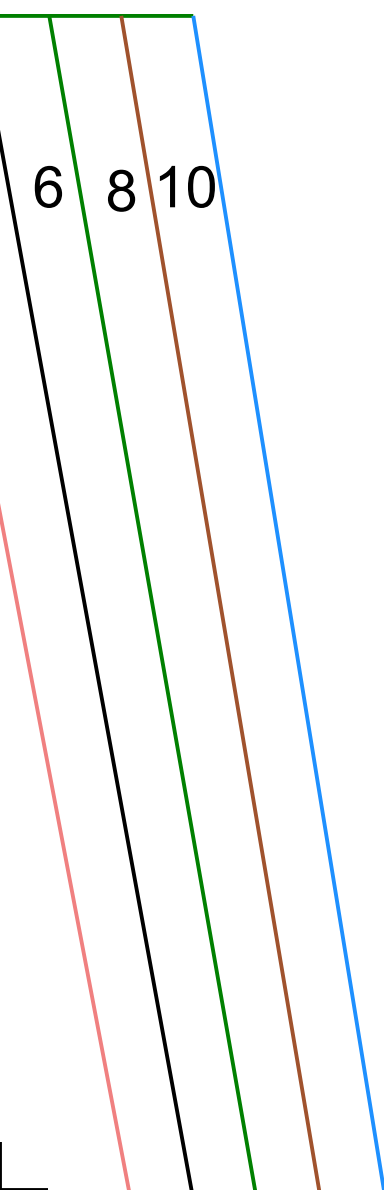
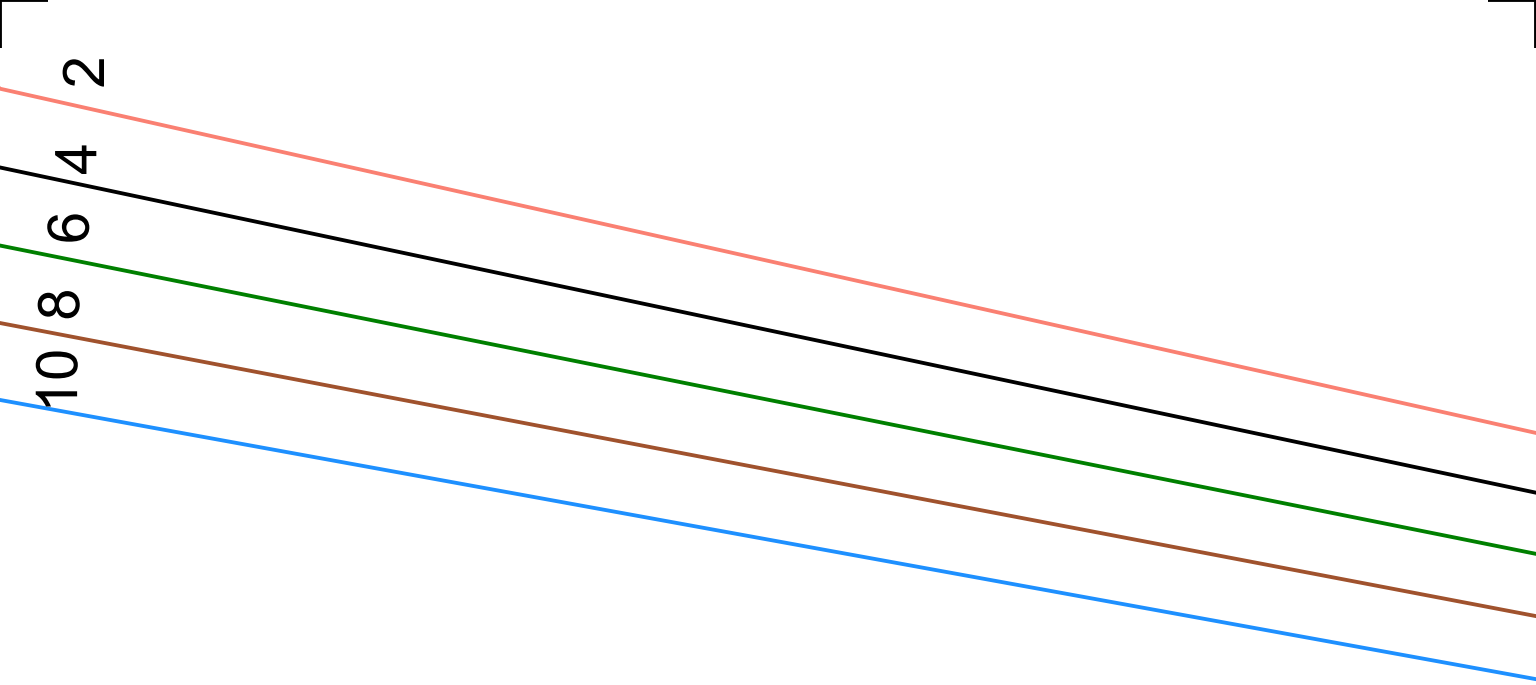


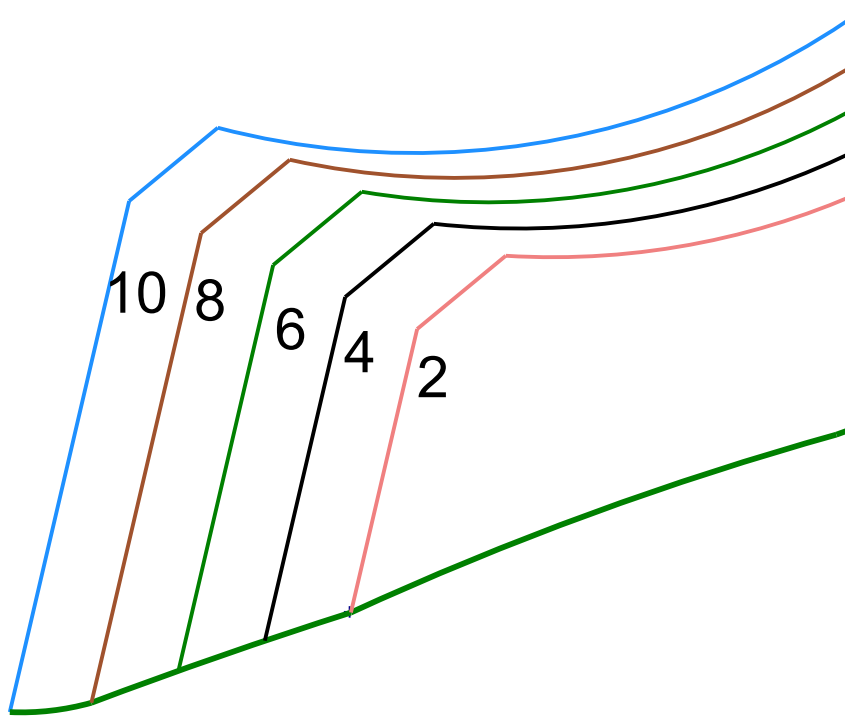
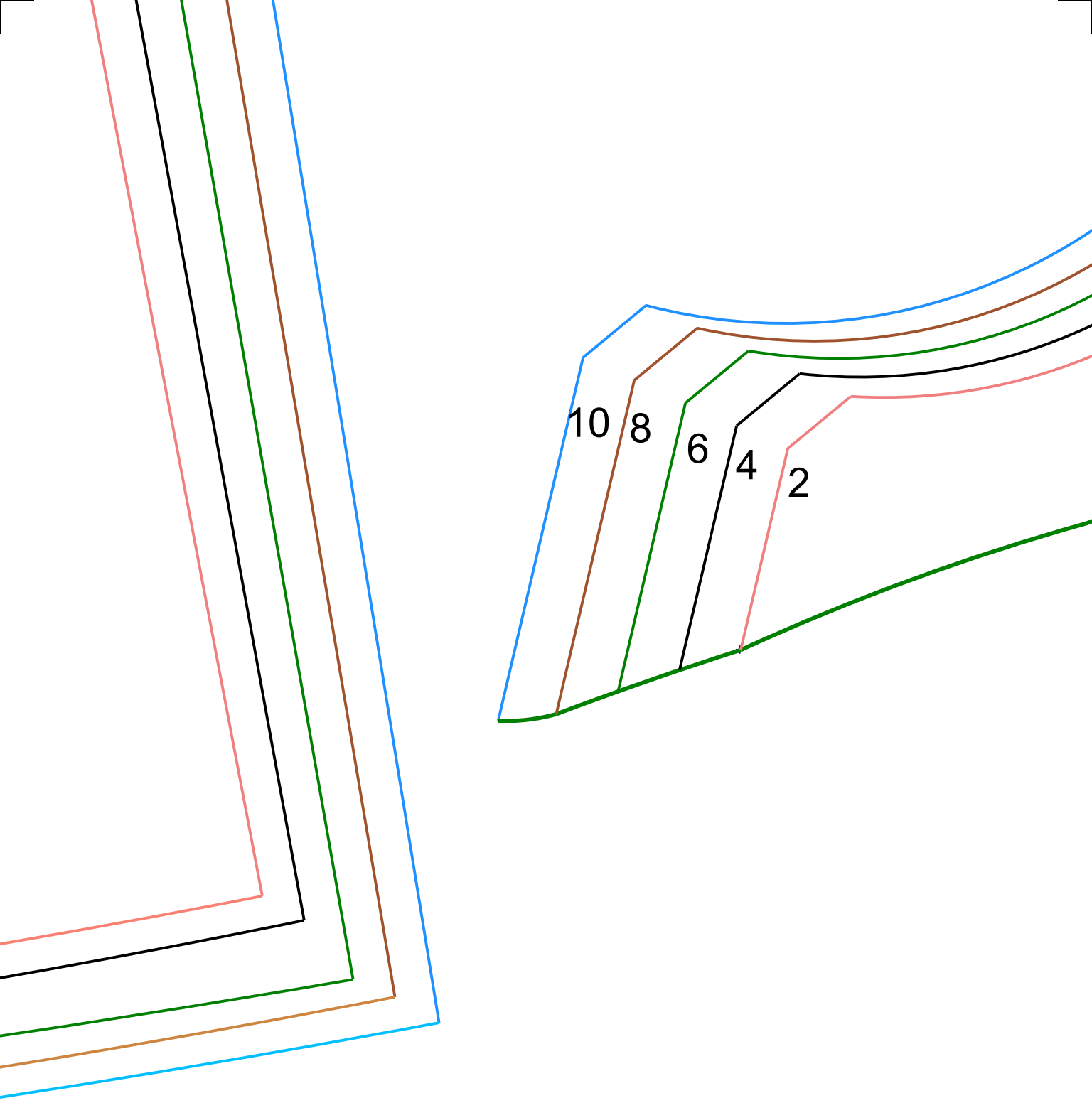




Holly Top
Front
Size 2 to 10
Cut 1 on fold

center front cut on fold





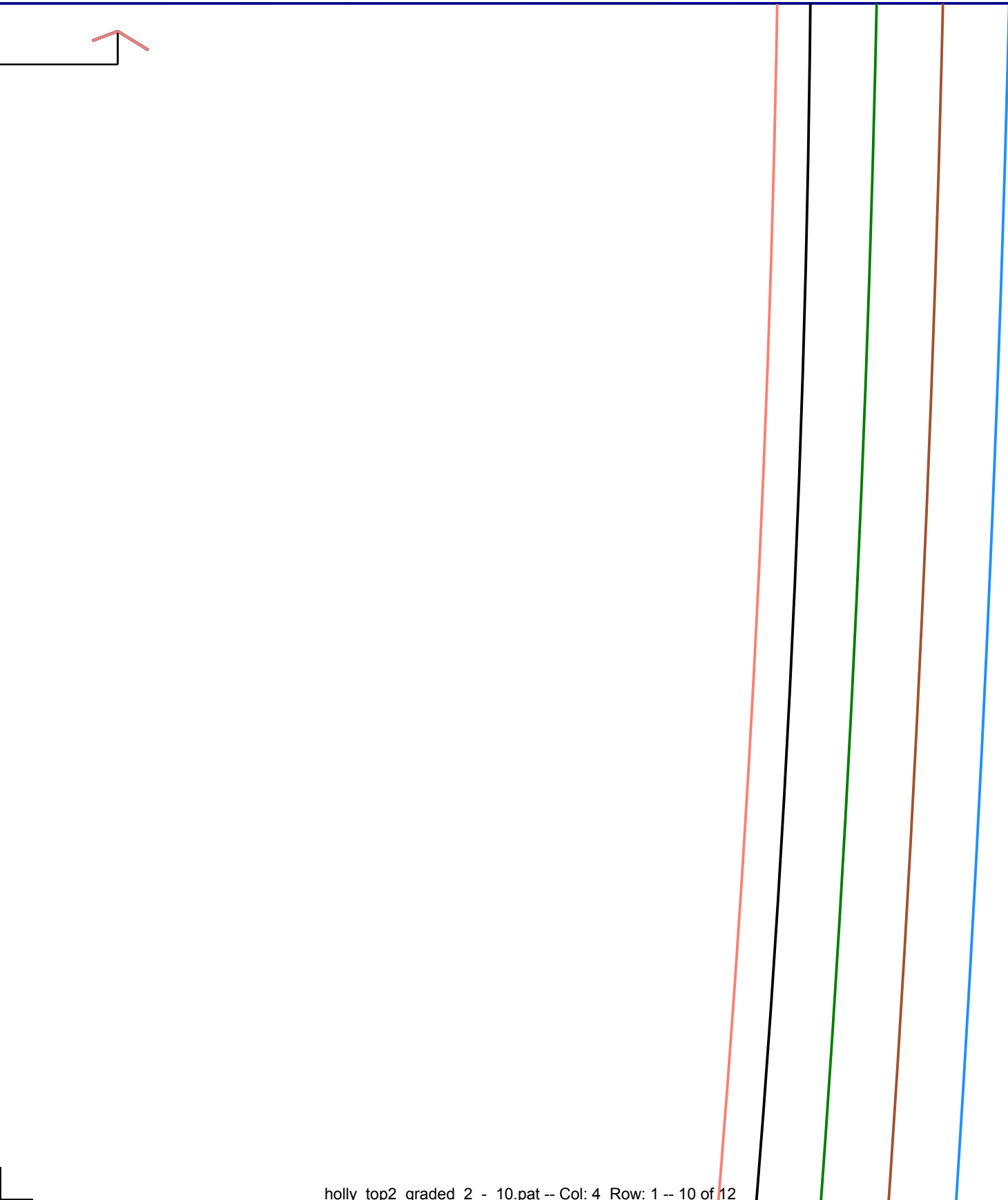
10

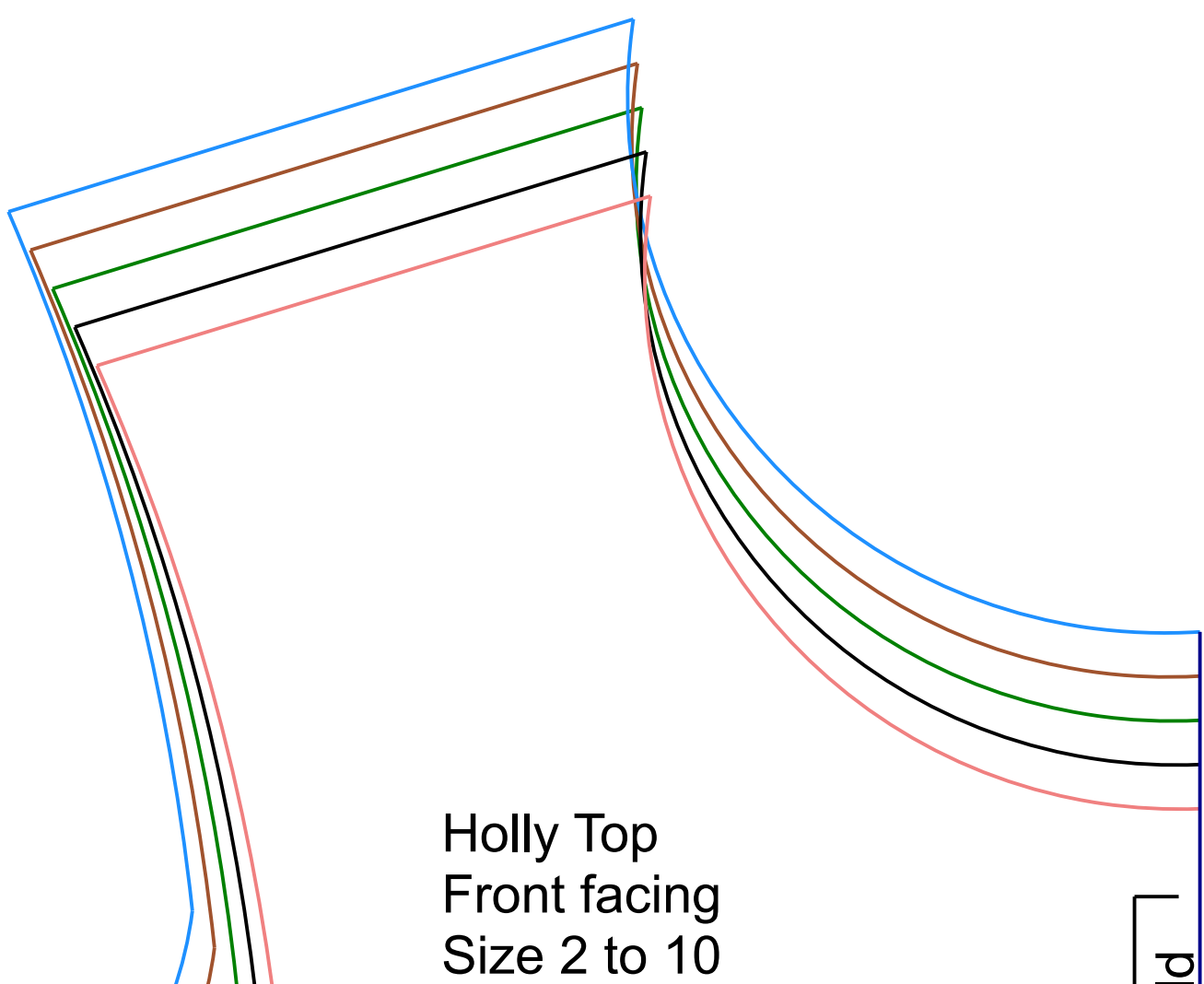
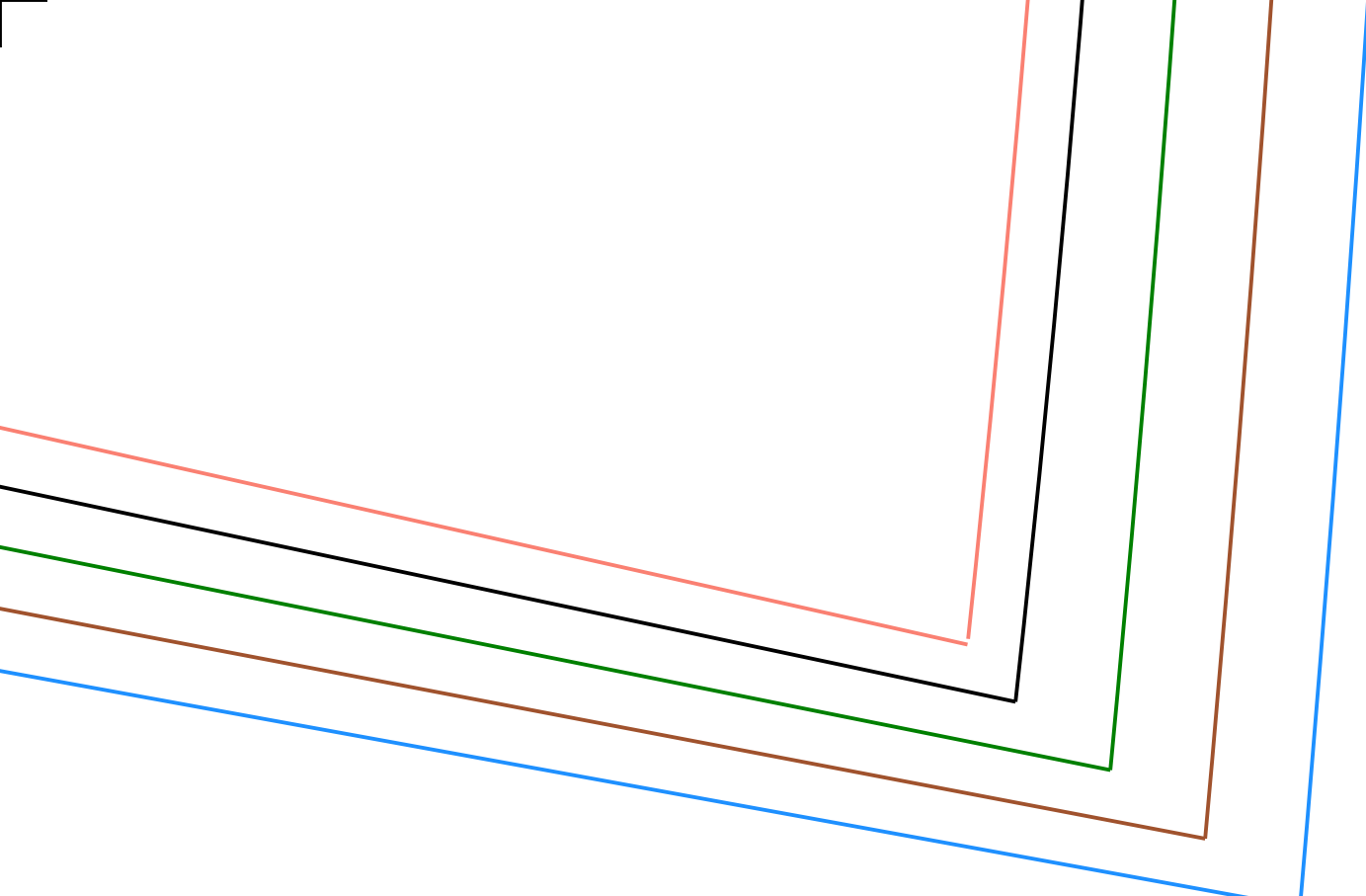
8

6

4

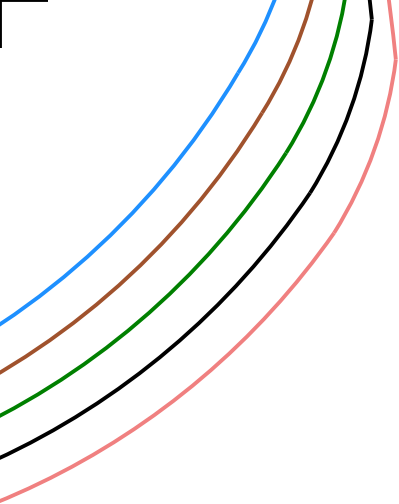
2





Holly Top
Front facing
Size 2 to 10

old



Cut 1 on fold fabric
Cut 1 on fold interfacing

CF on fo

